



**The Worst Day of Your
Business Life...**

Adams 153 safety tips.....

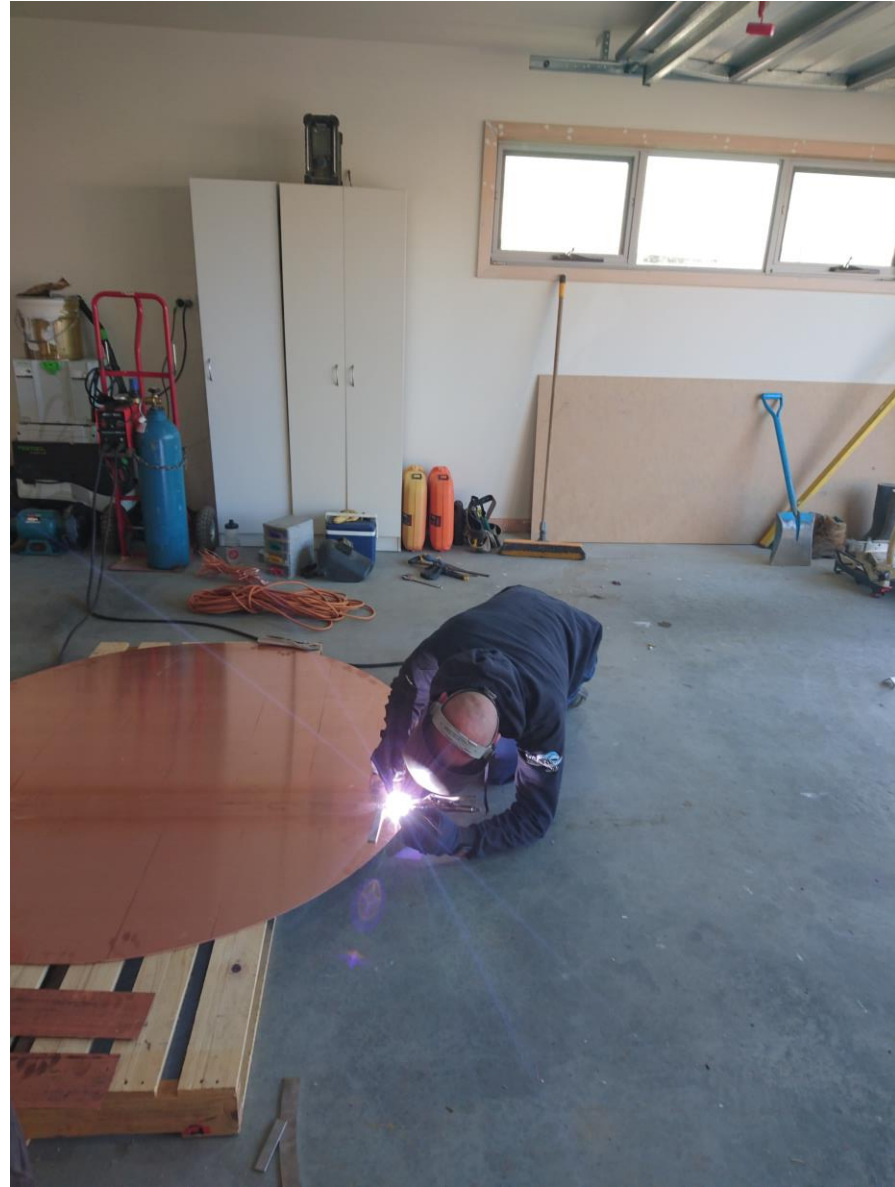
- 1 - No Not really
- 2 - I doubt anyone is reading this
- 3 - why are you reading this and not listening to me
- 4 - If I hear anyone laughing I know you are reading this and not listing to me
- 5 - Now I am just wasting time
- 6 - I wonder what it would be like to fly
- 7 - I am single, please tell your single friends
- 8 - No one should laugh at the previous point
- 9 - I promise the rest is serious with the right amount of humour

October 2013 – Where it all began

A brief history or Adams Distillery

- The initial idea was formed during a visit to Scotland with my dad, Oct 2013
- I contacted other established distilleries and asked to volunteer my labour in exchange for teaching me how to make whisky.
- Fannys Bay, Redlands (the original site) and Lark Distillery all obliged. But most of my time was with Matthew Cooper at Fannys Bay.
- The project was too big for myself, so I conned and bribed Adam Saunders to build this with me
- He said yes..... Silly man
- After some knock backs by local council on the original location. We finally broke ground, July 2016, on Glen Ireah Estate, Perth Tasmanian, Australia. Nearly three years after the idea.









The Market was Calling: Expansion Time

- After we made and filled our first Cask in 2016, we took it steady and slow through 2017
- We made approx. 4500L of New Make, and picked up a lot of contract work
- In early 2018, we decided there was room in the contact market to expand, so we did.
- New Stills, Mash Tun, Fermenters and a new Bond Store/Visitors centre





We thought we had made it...



But..... Things Happen....







So what Happened?

Investigation and Outcome

- Work Safe Tasmania
- Collection of evidence
- Interviews
- EmploySURE to the Rescue

Charges and Court Case

- Someone needs to be held accountable
- Lack of Training and Supervision
- Next Appearance November 2023
- What Employers have provided

The Mental Health Side

There is more to safety than just the buildings and physical – mental safety

- Stress – (my story)



**I gained 20kg after the fire,
I was well over 200kg now
And I was going to die
sooner than I should:**

- **Diabetes**
- **Stress**
- **Depression**
- **Unhealthy work/life balance**



Then I lost 80kg and counting 😊

What this has lead to:

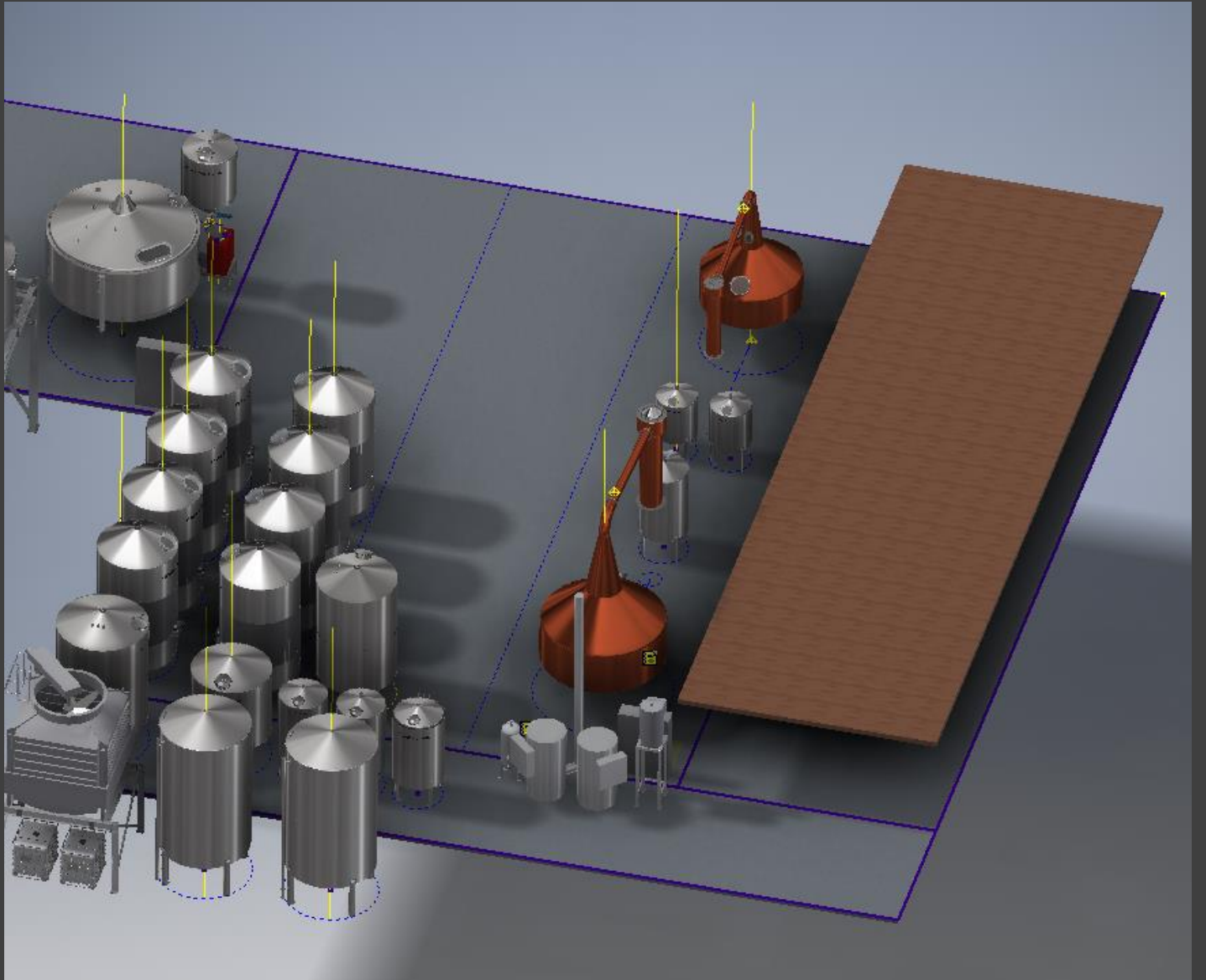
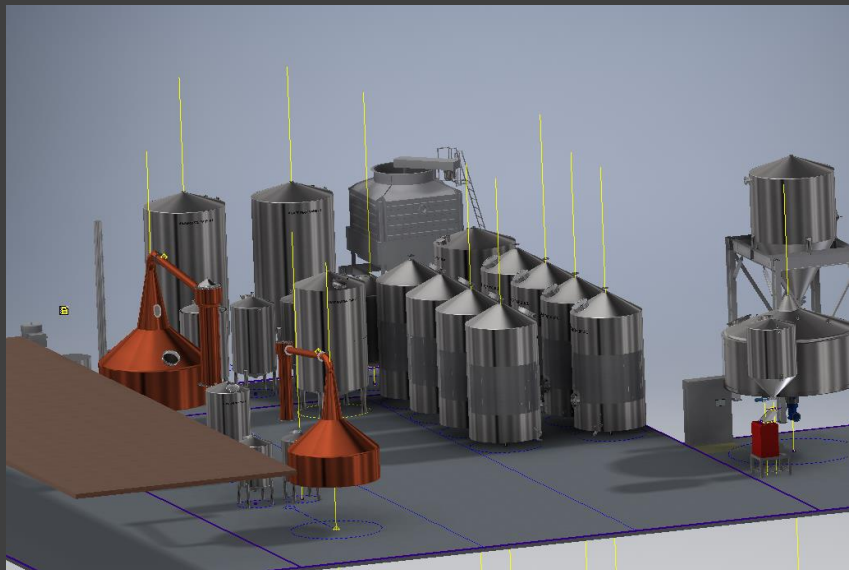
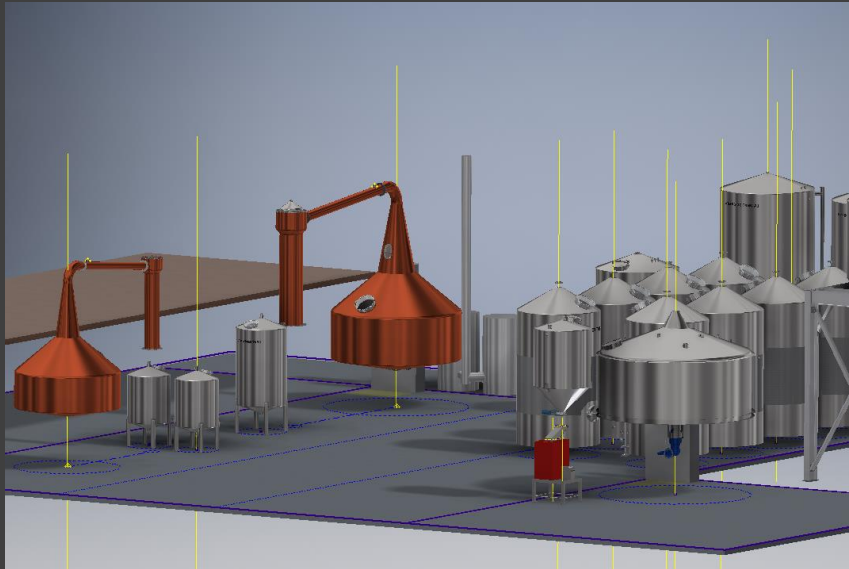
- **Regular Mental Health Checks**
- **Diabetes under control**
- **Better work/life balance**
- **Self care & enjoy life**

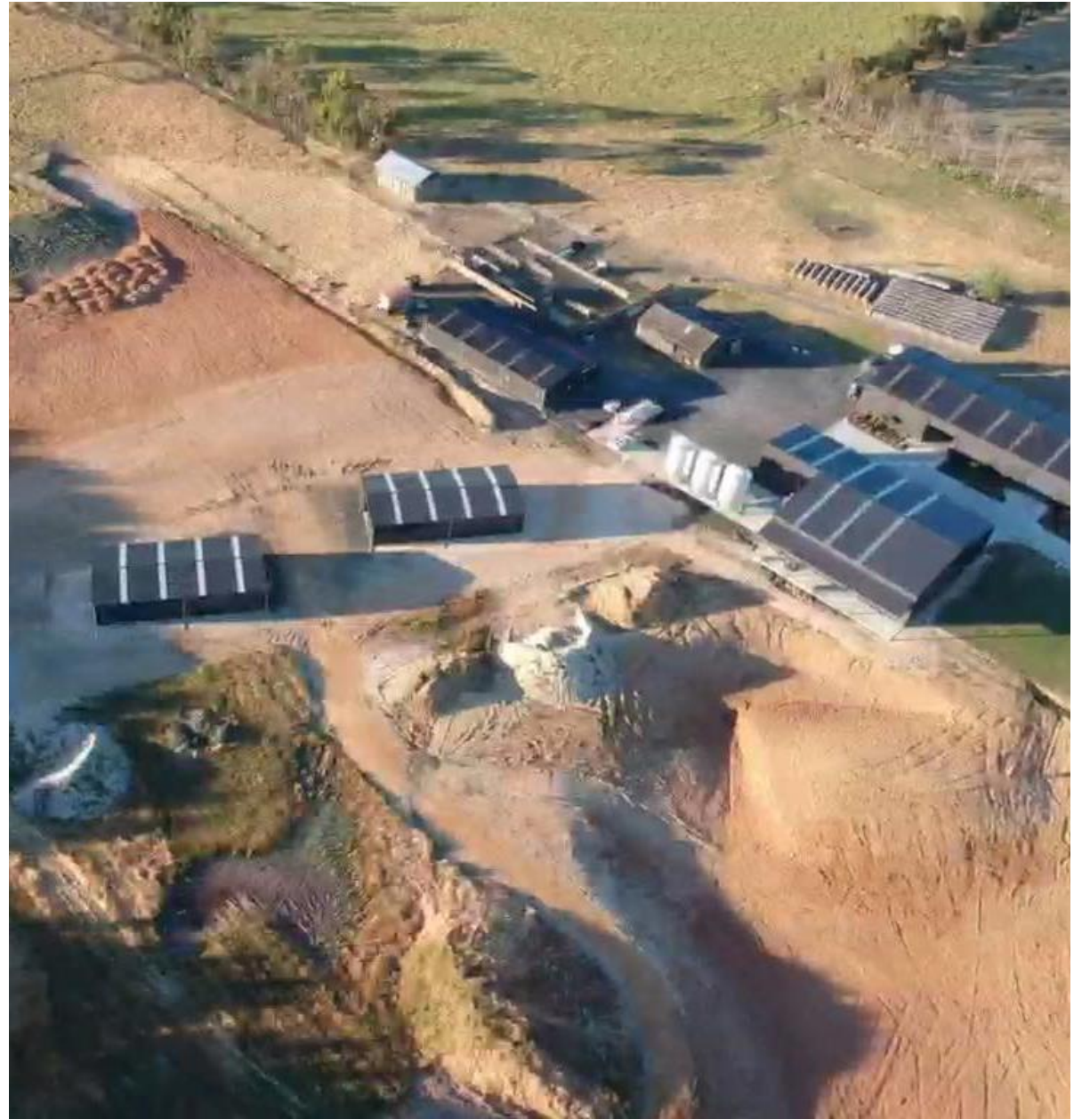
INSURANCE

- Cameras helped immensely
- Employsure - Documents
- Claims preparer
- DANGERS OF UNDER INSURANCE

Where Are We Now?

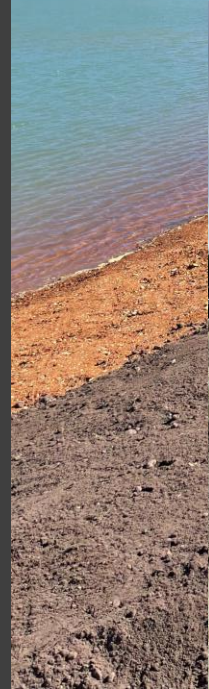
- Decision to continue
- Rebuild to Distillery
- Investors













Pre~incident Planning



ADAMS DISTILLERY 7 Eskleigh Rd Perth

LEGEND	
FIP	Fire Indicator Panel
SIP	Sub Indicator Panel
MP	Mimic Panel
→	Site Entry
→	Building Entry
⊗	Fire Hydrant
⊗	Hydrant Booster
⊗	Sprinkler Isolation
→	Sprinkler Booster
△	Manifest/MSDS
⊗	Natural Gas Isolation
⊗	LPG Isolation
⊗	LPG Storage
⊗	Bulk Petrol
⊗	Bulk Diesel
⊗	Main Switch Board
⊗	Distribution Board
⊗	High Voltage
⊗	Generator
⊗	UPS
S	Solar Panel Isolation
■	HAZMAT Location
⊗	Assembly Area
♿	Refuge Area

Water Tanks for Fire Fighting

Details to take Away

1. - Plan Plan Plan - and then Plan some more
2. - Engage the right experts in their fields
3. - Look after your mental health
4. - Correct Insurance
5. - Correct documentation
 - Employees
 - Yourself
 - Business

Take Breaks, enjoy life and have fun, it's a fun industry.

Employsure Details

- **Phone Number - 0800 365 515**
- **E-mail - info@employsure.co.nz**
- **www.employsure.co.nz**